

RIBA 

Chartered Practice

AQUA

architecture | design

Imaging | Urban Design | Interiors | Building Consultancy

3 Vicarage Gate, Kensington, London, United Kingdom

+44 (0) 7930 484745 | **+44 (0) 7931 890118**

info@aquaarchitects.com | **www.aquaarchitects.com**

SPIRIT OF AQUA

PHILOSOPHY

AQUA architecture | design consultancy ltd is based in London, specialising in residential, commercial, master planning and urban design projects.

This small architectural practice is established upon extensive knowledge of development projects, from initiation to completion,

Design is carefully tuned through rational and precise detailing. Through an evolving vision, with specialist intervention, project requirements are met and exceeded with relevant, sustainable, cost effective, and elegant architecture.

SERVICES

Feasibility studies, Site analysis, Environmental Climatic analysis. Planning consent, Concept to Detailed Design, Visioning, Public consultations. Construction management,, Architectural Project Management, and Integrated Multidisciplinary Design Co-ordination.

SECTORS

Residential (high end & low cost housing), Urban Regeneration, Master Planning, Infrastructure, Sports, Hospitality, Retail & Commercial sectors, including architectural visioning.





“

...A STRONG DESIGN PHILOSOPHY SHOULD FLOW THROUGH ALL ELEMENTS OF OUR BUILT AND NATURAL ENVIRONMENTS IGNITING VISIONARY AND SENSORY EXPERIENCES FOR ALL.

”



DESIGN PRINCIPLES

1. Integrated design process.
2. Heritage, place making, culture and spirit.
3. Environmental analysis for sustainable design strategies.

Our United Kingdom based projects are practical and efficient, enriched in quality and context, within strict planning processes, functionality and economic viability.

Our Middle East experience is in high profile projects, with high-tech solutions, elaborate visions and innovative ideas, creating new and visionary benchmarks.

We find a balance between our clients' vision and the premise that DESIGN should always respect and be adapted to its CONTEXT.



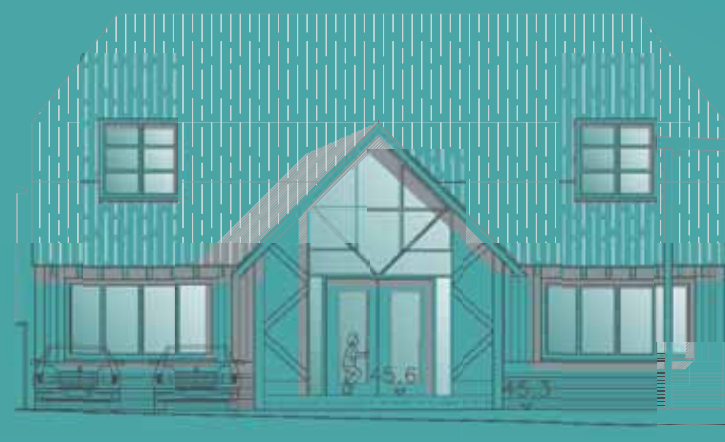
AQUA COLLABORATIONS

Aqua architecture | design works in collaboration with international firms, to provide world class expertise and specialist intervention in the delivery of design consultation services, and architectural management of projects.

AQUA TEAM

The Aqua team has extensive and diverse expertise in their specialist sectors. We have experience in the UK and the Middle East region in tune with the cultural requirements, as well as environmental and sustainable strategies to establish design criteria.

Working with the Royal Institute of British Architects (RIBA) we promote best practice in design.



UK PROJECTS CONTEXT HERITAGE CONTEMPORARY ENVIRONMENT CONSERVATION
TRANSFUSION SIMPLICITY IN DETAIL FUNCTIONALITY CONTEMPORARY UK PROJECTS
CULTURE HERITAGE CONTEXT A LIFE STYLE ENVIRONMENT UK PROJECTS CONTEXT
HERITAGE CONTEMPORARY ENVIRONMENT CONSERVATION TRANSFUSION SIMPLICITY
IN DETAIL FUNCTIONALITY UK PROJECTS CONTEXT HERITAGE CONTEMPORARY
ENVIRONMENT CONSERVATION TRANSFUSION SIMPLICITY IN DETAIL FUNCTIONALITY
UK PROJECTS CONTEXT HERITAGE CONTEMPORARY ENVIRONMENT CONSERVATION
TRANSFUSION SIMPLICITY IN DETAIL FUNCTIONALITY UK PROJECTS CONTEXT

High End Luxury Residences, Central London, UK

One of the most prestigious and high profile residential locations in the world; where a circa 50,000 square feet building will be knocked down and rebuilt into ultra-high specification residential apartments.

Property location: this building occupies a prominent high-street position between the famous central london landmarks of Harrods, royal albert hall, victoria and albert (v&a) and natural history museums.

Working within the realm of the historic elegance to create a contemporary feature to compliment the context and enhance the experience.



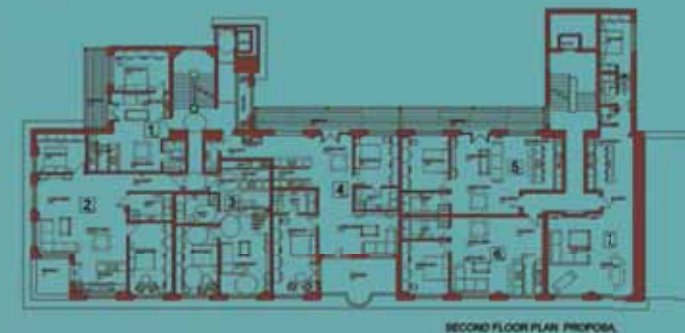
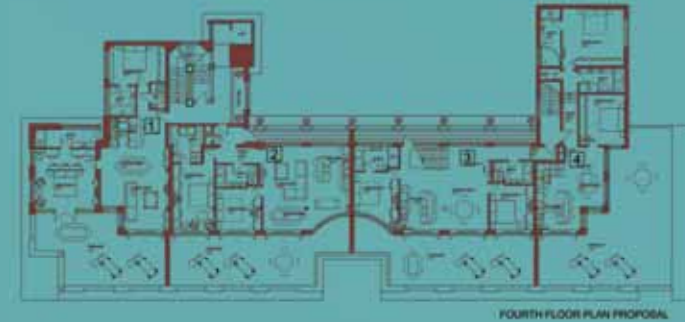


Long Island House, West London, UK

Super modern and contemporary details, within this proposal, makes this Heritage Art Deco Building into West London's very own Manhattan Apartments, comprising penthouses overlooking London views.

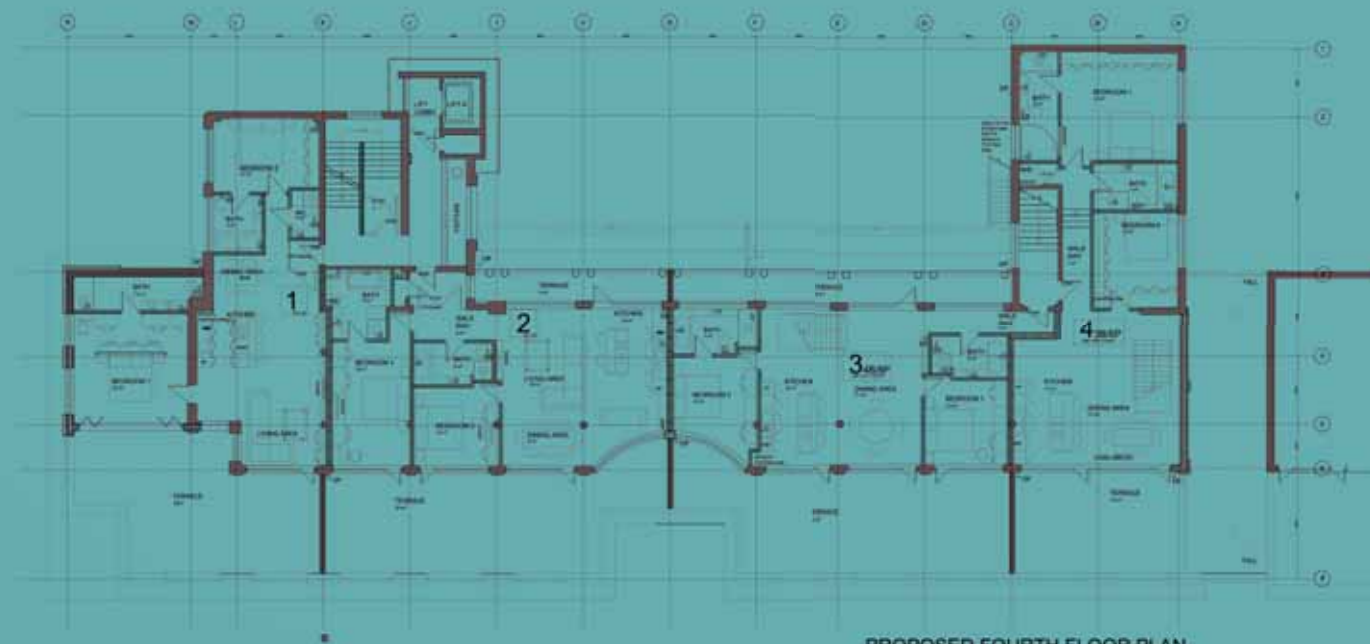
The newly refurbished apartments with large spacious living areas, create an ideal location for professionals and small families.

Designed to comply with the London Homes Guide and Life time Homes standards, with spacious planning.





PROPOSED FIFTH FLOOR PLAN



PROPOSED FOURTH FLOOR PLAN



Orchard House II Bromley London, UK

Conservation Area Residential Complex

Residential development comprising private housing and flats, in an exclusive highly sort after conservation area.

The conceptual and technical design is undergoing stringent Planning Approval for this development. The design evolves through attention to the local Tudor design features and local heritage, incorporating contemporary elements to steep pitched roofs and tall traditional Georgian housing.





Sainsbury Hendon, North London, UK

(Eco homes accredited)

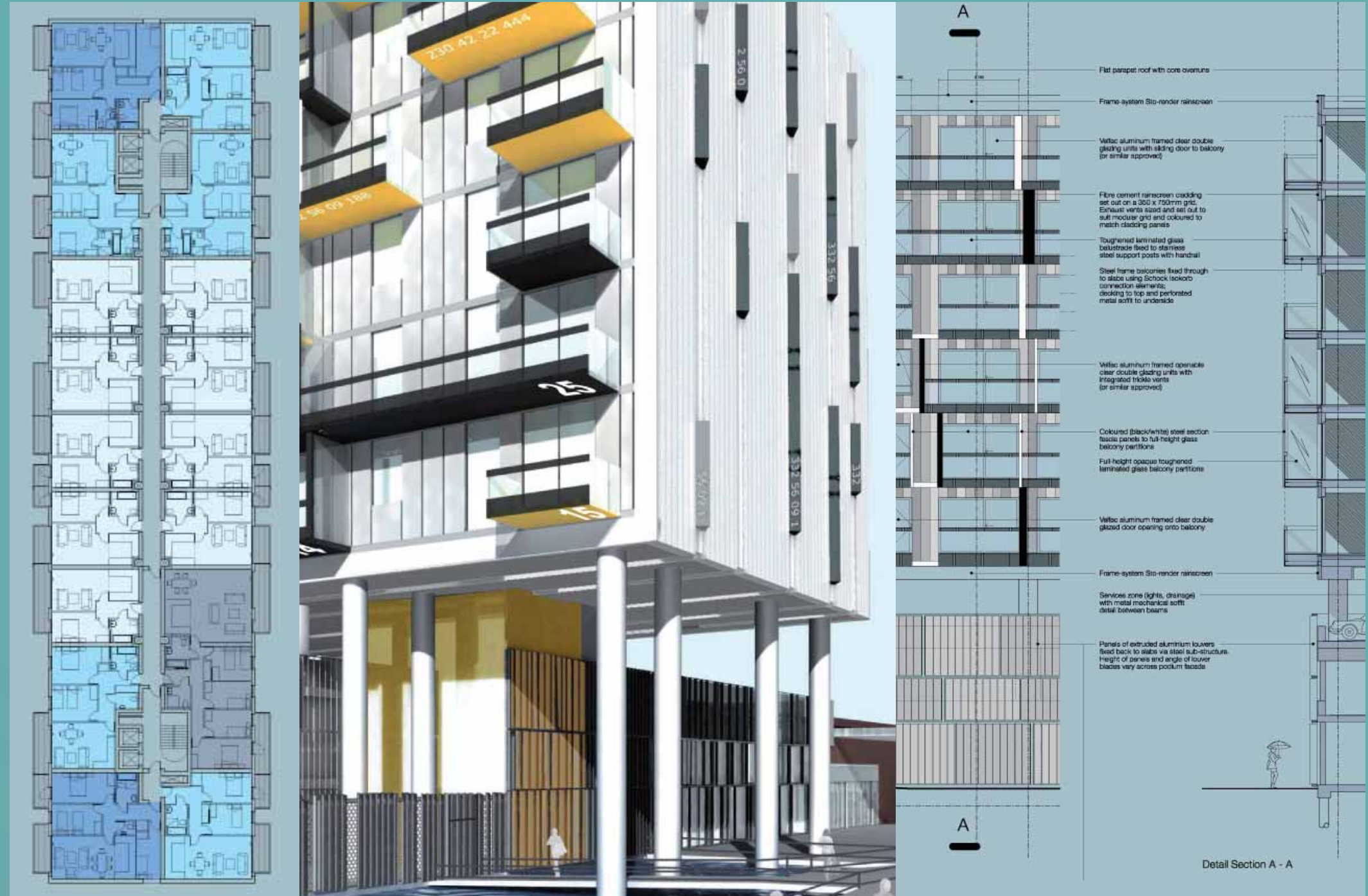
Shopping & Residential Complex

(Courtesy of ESA Architects)

Mixed-use development comprising private and social housing above a retail extension, to uplift and regenerate an urban locality in North West London.

The conceptual and technical design was produced to gain Planning Approval for this development. The design evolved through a functional yet highly creative facade design proposal.

Creating layers of opaque, transparent, and louvred features to produce a contemporary solution. The internal layout was carefully negotiated with the various consultants, the Eco homes specialists and Planning authorities, to create highly efficient, yet comfortable apartment designs.



Concorde Business Centre Maidenhead, Reading, UK

(Breeam accredited design)
Commercial offices building

(Courtesy of ESA Architects)

The design represented an environmentally informed Glass Box. Passive Solar aspects evolved the 'brise soliels' louvered over hang on 3 sides. Horizontal panelling with solid elements avoided solar glare. Modular facade cladding provided a cost effective design. Dramatic glazed entrance created a key visual link. Timber louvered cladding created the Car Park facade.

A simple, functional and constructive understanding of contemporary office designs, combined with a sustainable approach was undertaken, as well as value engineering the way forward to provide the finest practice in design,



Jenner House Residences, Wembley, London.

Planning application &
Concept Design.

Planning proposal for this small social housing scheme was produced to incorporate lifetime homes, London housing standards, and wheelchair accessible dwellings.



Kenton Road Houses, West London.

Planning application &
Detail Design Refurbishment.

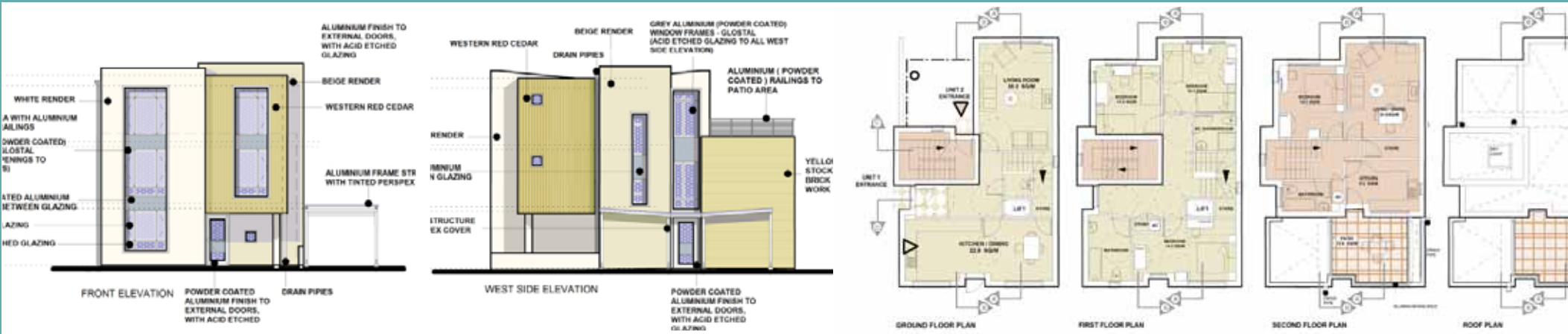
This scheme transforms semi-detached houses into four one bedroom flats, retaining the external facade within the traditional housing context.



Barrington Road, Kent.

Planning application &
Detail Design.

Designed as a simple contemporary facade, incorporating the latest design standards and high quality finishes, this new residential building comprises timber cladding, rendering and aluminium framed glazing, to create a modern home.



Seattle Coffee Company, Victoria, London, UK

Concept branding design to detailed fit-out

This chain of trendy coffee shops, kiosks and cafes were set up on basic design principles using an established palette of materials, equipment design and colourful posters to create the branding styles.



Ixxy's Bagels, London, UK

Concept branding, detail design & fit-out

Based in prominent locations in central London, this bagel cafe concept brings through a relaxed yet friendly atmosphere through bright and cheerful theme, materials & lighting.



Feast, London, UK

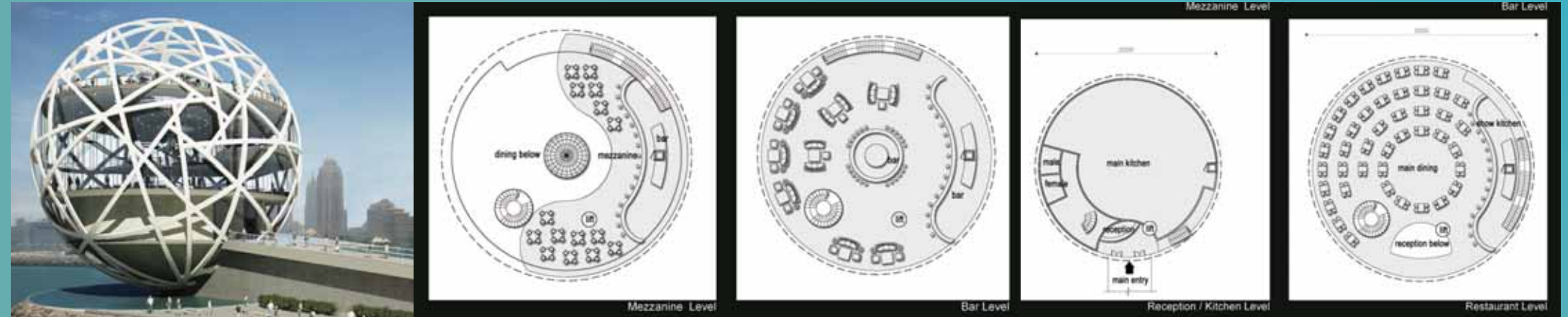
Concept branding detail design & fit-out

Contemporary white textured finishes create the simple minimal design flavour for this vegetarian fast food restaurant.



361 Restaurant Bar, Palm Jumeirah, Dubai, Uae Concept Design Stage

The iconic design for this restaurant, bar and private club utilises a 360 degree view, overlooking the coast of Dubai. The site is located at the very edge of the palm jumeirah reclaimed Island, in Dubai.



Padideh Retail mall, Iran Concept design visioning & master planning

Visualisation of the retail mall and several branded outlets for a large mixed use development.



Dubai Sports City Mall, Dubai, UAE Detail design & master planning

Construction design and multidisciplinary design coordination for this sports themed shopping mall, created unique opportunities for innovative technical detailing, to create dynamic public spaces.



SUSTAINABLE & CLIMATIC DESIGN

Sustainable, Environmental & Climatic Design Configuration:

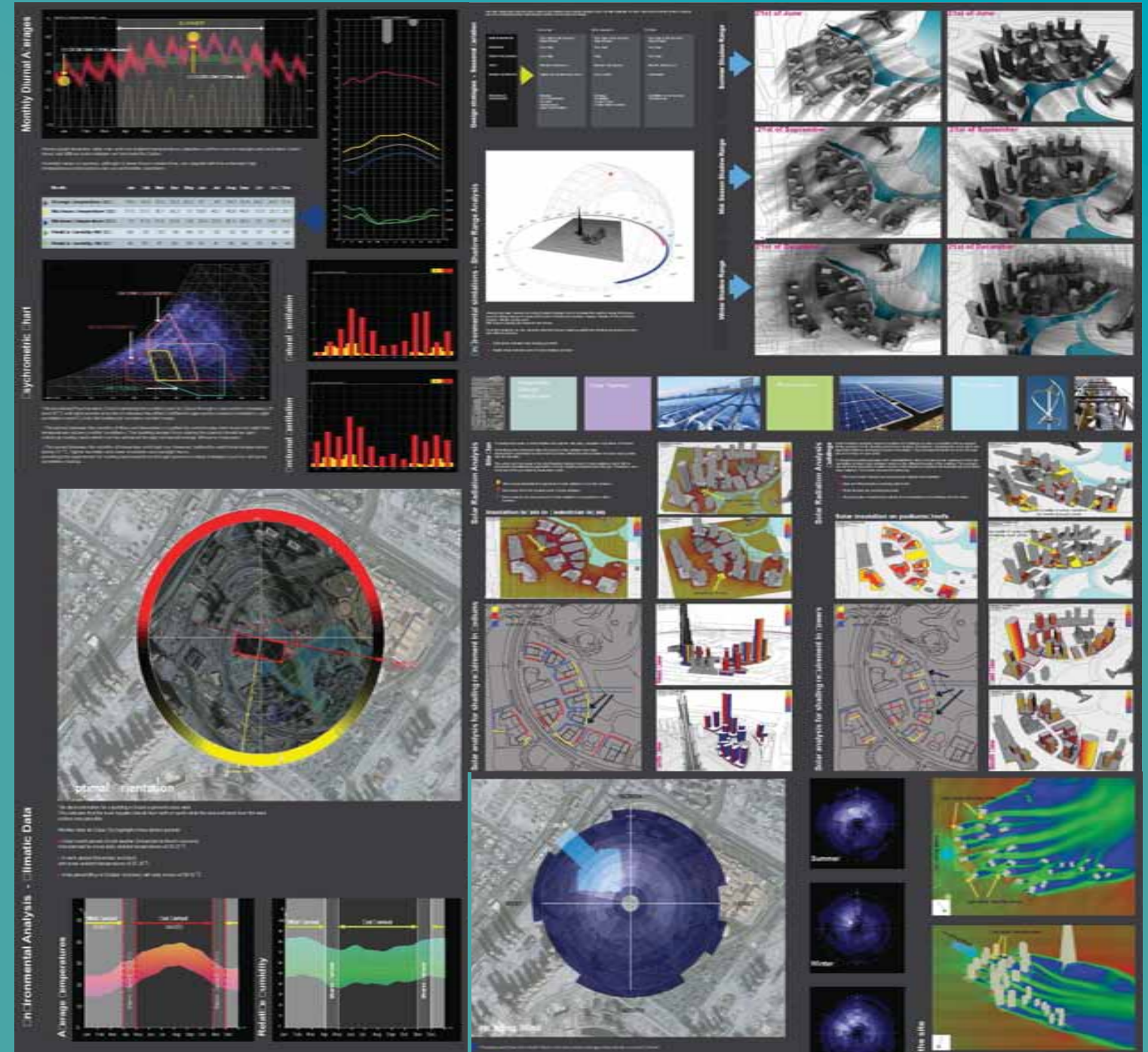
An essential tool for our design process is strong emphasis on environmental context for spacial configuration.

Environmental analysis includes optimal orientation, average temperatures, relative humidity, prevailing winds, psychrometric chart, shadow range analysis, and solar radiation analysis.

The ideal orientation for buildings can influence passive design strategies, through sunlight, daylight, wind and air flow. These factors indicate the comfort zone throughout a year as well as the effects of different approaches (natural ventilation, night ventilation, glazing, shading, heating and ac,) for buildings and open spaces. Weather data highlights the distinct periods of mild, warm or hot seasons, advising on vernacular design solutions.

We consider full project life cycle, for carbon critical design, and cradle to grave solutions. The urban fabric focuses on creating comfortable homes, easy access, secure communities, public realm and other key factors to promote an enhanced quality of life.

ENVIRONMENTAL SIMULATIONS OPTIMAL
ORIENTATION AVERAGE TEMPERATURES
RELATIVE HUMIDITY
SOLAR RADIATION ANALYSIS ENVIRONMENT STUDY
PREVAILING WIND STUDY SOLAR ANALYSIS FOR SHADING
REQUIREMENT AIR FLOW ANALYSIS PSYCHROMETRIC
CHART ENVIRONMENTAL SIMULATIONS OPTIMAL



INTERNATIONAL PROJECTS DESIGN DETAILS SUSTAINABLE INSPIRING ICONIC
INNOVATIVE INFLUENTIAL EXTRAORDINARY UNIQUE VISION DIFFERENCE IN
THE DETAILS INSPIRING ICONIC INNOVATIVE INFLUENTIAL EXTRAORDINARY
UNIQUE VISION INTERNATIONAL PROJECTS INSPIRING ICONIC INNOVATIVE
INFLUENTIAL EXTRAORDINARY UNIQUE VISION DIFFERENCE IN THE DETAILS
INSPIRING INTERNATIONAL PROJECTS INFLUENTIAL EXTRAORDINARY UNIQUE
VISION DIFFERENCE IN THE DETAILS INSPIRING ICONIC INNOVATIVE INFLUENTIAL
EXTRAORDINARY UNIQUE VISION DIFFERENCE IN THE DETAILS INSPIRING ICONIC



'West Side' Emaar Downtown Dubai, UAE.

(Courtesy of Atkins Global)

Urban Design Proposal: Entertainment district comprising exclusive commercial, hospitality and residential towers, and theatre design.

'West Side' is a world class Entertainment Destination in Downtown Dubai, comprising of a total area of 820,000 sqm. This architectural master plan offers a vibrant high end mixed-use development, with a 1800 seats theatre and opera house, hotels, exclusive residential towers, creative industries, design studios, galleries, comedy clubs, licensed restaurants, jazz bars and nightclubs.

The pre-concept design proposal was created through rigorous site analysis, swot analysis, urban design evaluation and regeneration, as well as global benchmarking, to create a new age urban space. The proposal included detailed areas schedules, feasibility studies, environmental analysis, renewable energy solutions and low carbon considerations. Optimum orientation was proposed for the buildings, and to improve the quality of the pedestrian streets, lanes and squares, as well as to increase the level of thermal comfort, extending the duration of the seasons in which outdoor spaces can be used. The scheme, emphasised the application of environmental solutions to the visioning design of towers and urban spaces, to portray conceptual values such as public realm, high street, green space, public art, waterside activities, shading structures and urban living.

Through working closely with the clients to meet and exceed their financial requirements and creative aspirations, this proposal for an international class destination was achieved.





West side Boulevard high Street hotel
Section C-C



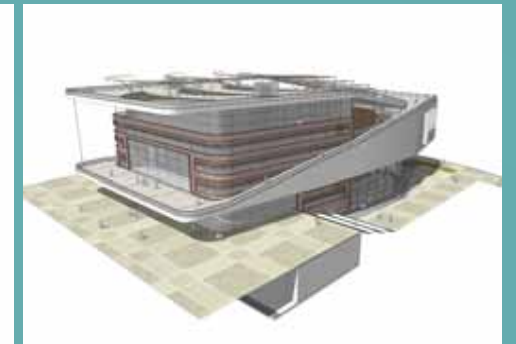
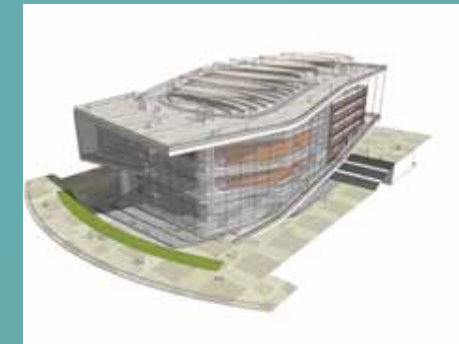
Opera House, Theatre & Events Hall, 'West Side' Emaar Downtown

Dubai, UAE.

(Courtesy of Atkins Global)

The unique design for this multi-purpose events building, comprising of 14000sqm, was carefully evolved through coordination with UK based theatre specialist, to create the interchangeable spaces. The complex layout considered access, flexibility, functionality and translucent design, within its complex layout.

The building proposal celebrates the public realm, emphasising the links between internal and external spaces which over look the landmark buildings and create huge public places. The ramp up to the roof space leads to a huge amphitheatre, overlooking the theatrics of the downtown district.



Coral Island Resort, Jumeira World Islands, Dubai, UAE

Residential & Hospitality Mixed-Use development

(Courtesy of Atkins Global)

Coral Island Resort was formed by linking individual islands to create a single large island, within the World Islands, off the coast in Dubai. The large mixed use development comprised of high specification hotel resorts, retail, clubs, and residential dwellings, divided into several smaller projects.

A functional and constructive understanding of high profile resort designs evolved within the proposals. This included review and coordination with the internationally based multidisciplinary design teams, as well as initiating the best technical solutions within the construction packages.

A sustainable approach was undertaken, as well as value engineering the way forward to provide the finest practice in design, at an international standard. This involved resolution of complex island reclamation and infrastructural design issues, statutory liaisons and approval, and cross discipline design coordination.

Concise team organisation and program was initiated to meet stringent targets, design evaluation and review, with continuous presentations and meetings to the client's project manager (Mirage Mille) and client (Nakheel).



RIBA 

Chartered Practice

AQUA

architecture | design

Imaging | Urban Design | Interiors | Building Consultancy

3 Vicarage Gate, Kensington, London, United Kingdom

+44 (0) 7930 484745 | **+44 (0) 7931 890118**

info@aquaarchitects.com | **www.aquaarchitects.com**